



# INDIAN HARBOR YACHT CLUB

## Classic Yacht Regatta

September 12, 2020  
Greenwich, CT

### SAILING INSTRUCTIONS

#### 1. RULES

- 1.1. The regatta will be governed by the rules as defined in *The Racing Rules of Sailing (RRS)*.
- 1.2. For the purpose of rules 14 and 44.1(b), any contact between boats shall be considered serious damage. This changes rules Part 2 Preamble, 36(b), 44.1(b), 60.3(a)(1) and 61.1(a)(4).
- 1.3. All yachts shall observe the change of the definition of “Keep Clear” and rules changes noted in NOR 1 Rules.

#### 2. NOTICES TO COMPETITORS

- 2.1. Notices will be posted online at [yachtscoring.com](http://yachtscoring.com).
- 2.2. The race committee intends to broadcast pertinent race information on VHF channel 05A. Failure of such information to be given or received shall not be grounds for redress. This changes rule 62.1(a).

#### 3. CHANGES TO SAILING INSTRUCTIONS

Any changes to the sailing instructions will be posted before 0900 on Saturday, September 12, 2020.

#### 4. SIGNALS MADE ASHORE

- 4.1. Signals made ashore will be displayed on the main flagpole at IHYC.
- 4.2. When code flag “AP” is displayed ashore, “1 minute” is replaced with “not less than 60 minutes” in the race signal “AP”.

#### 5. SCHEDULE OF EVENTS AND RACE

Saturday, 9/12	1100	Competitors’ Meeting by VHF 05A
	1155	First Warning Signal

\*All classes shall sail one race.

#### 6. CLASS FLAGS

- 6.1. Class flags will be numeral pennants.
- 6.2. Class assignments will be shown on the final scratch sheet, which will be available by 0900 on Saturday online at [www.yachtscoring.com](http://www.yachtscoring.com). Owners/skippers are reminded to use the final scratch sheet as the preliminary scratch sheet is subject to change.

- 6.3. All competitors shall fly their class flag as designated on the final scratch sheet. Flags shall be flown from the permanent backstay approximately six feet above the deck. Yachts with no permanent backstay shall fly their class flag from another conspicuous location.
- 6.4. Classes may be started together. This will be indicated on the final scratch sheet along with starting order and assignment to the Long or Short Course.

## **7. RACING AREA**

- 7.1. The racing area will be in Captain Harbor and in Long Island Sound, as shown in Addendum 3 - Racing Areas.
- 7.2. Figure 2 in Addendum 3 - Racing Area shows three red exclusion zones that shall not be entered while racing.
  - 7.2.1. The exclusion zones do not include the area immediately adjacent to race mark "A" (Gong G"1" E of Little Captain) to allow for a seamanlike rounding when "A" is designated as a rounding mark.

## **8. COURSES AND MARKS**

- 8.1. Marks are described in Addendum 1 - Racing Mark List.
- 8.2. Yachts will sail either a Long Course or a Short Course. Long and Short course assignments will be given on the final scratch sheet.
- 8.3. A list of potential courses is given in Addendum 2 - Course List. Each course is designated by a single letter or letter-number combination: for example: Course A, Course B, course X1. All courses start inside Captain Harbor, proceed to a yellow inflatable tetrahedron anchored to windward of the race committee signal boat (mark Z) and then proceed in the order indicated around government marks in Long Island Sound in the vicinity of the mid-Sound buoy (32A) and the Captain Islands before finishing at mark M as described in SI 12 Finish Line. Each course shows the order in which marks are to be passed and which side the marks are to be left or rounded, except for mark Z and mark A when it is the first mark after mark Z. The race committee will announce which sides mark Z and mark A are to be rounded prior to the first warning for the first class to start.
- 8.4. Government marks that are not marks of the course may be passed on either side at the sole discretion of the skipper/owner.
- 8.5. Course distances are determined by the race committee and shall not be subject to redress.
- 8.6. No later than five minutes before the first warning signal, the race committee will designate the Long and Short courses by displaying on the signal boat course board the course letter underneath L for Long Course and S for Short Course.

## **9. PRE-START IDENTIFICATION AND RETIREMENT**

- 9.1. Prior to the first warning signal, all competing yachts shall sail past the stern of the race committee boat on starboard tack and announce their yacht name, sail number and how many crew aboard.
- 9.2. A yacht retiring from the race shall inform the race committee on VHF channel 05A.

## **10. STARTING PROCEDURES**

- 10.1. Races will be started in accordance with RRS 26, except as modified here. There will be a five minute interval between a start and the warning signal for the next division or class.
- 10.2. The initial starting sequence will be described on the final scratch sheet.
- 10.3. The race committee will signal individual recalls in accordance with RRS 29 and will attempt to hail boats that are OCS on VHF channel 05A. A failure to hail, the order in which hails are made, or a competitor not hearing her hail will not be grounds for redress.

## **11. STARTING LINE**

The starting line will be between an orange flag on the race committee signal boat and an orange inflatable tetrahedron. The starting line will be inside Captain Harbor.

## **12. FINISH LINE**

The finish line for all boats will be between Captain Island Red Nun 'N2' (Race Course mark 'M') off the western end of Great Captain Island and an orange flag on the signal boat. The signal boat will display a race committee flag and an IHYC burgee.

## **13. TIME LIMITS**

All yachts must finish the race no later than 1700hrs. Those yachts not finishing within the time limit will be scored Time Limit Expired (TLE) and be given points equal to the number of boats finishing in her fleet plus two points, but not more than Did Not Finish (DNF).

## **14. PROTESTS**

- 14.1. A protesting yacht shall notify the race committee of its intent to protest via VHF channel 05A after crossing the finish line or upon retiring.
- 14.2. Protests shall be filed at the IHYC Front Desk as soon as possible following completion of the race but no later than one hour after the last boat's finishing time or the signal boat docking time, whichever is later. Protest hearings, if any, shall be scheduled and heard at a time and place designated by the protest committee.

## **15. SCORING AND TIME ALLOWANCE**

Results for handicap classes will be based on CRF 2020 ratings and course distances as determined by the race committee. If applicable, one-design class(es), and the Catboat Division will be scored within their class provided there is a minimum of five boats per class.

## **16. PRIZES**

- 16.1. Racing awards will be announced at the discretion of the Organizing Authority; Indian Harbor YC.
- 16.2. Awards will be mailed to competitors.
- 16.3. The Frank Bowne Jones Founders Cup will be awarded for the fastest corrected time by a classic yacht on the Long Course.
- 16.4. The Spartan Trophy will be awarded for the fastest corrected time by a yacht other than the Frank Bowne Jones Founders Cup winner on the Long Course.
- 16.5. The Victory Trophy will be awarded for the fastest corrected time by a yacht on the Short Course.

## **17. RADIO USE**

Race communications channel will be 05A. In addition to the competitors' meeting, the race committee will make courtesy broadcasts to inform competitors regarding postponements, general recalls and other race-related information. The absence, inaccuracy or lack of timeliness of such broadcasts shall not be grounds for granting redress. The race committee will be under no obligation to acknowledge or answer radio communications except to acknowledge retirements, protests or reports of exoneration.

## **18. SAIL AND EQUIPMENT LIMITATIONS**

Sail and equipment limitations shall be as stated in the Notice of Race for all classes.

**19. DISCLAIMER OF LIABILITY**

Competitors participate in the regatta entirely at their own risk. See RRS 4, Decision to Race. The organizing authority will not accept any liability for material damage or personal injury, or death sustained in conjunction with or prior to, during or after the regatta.

**20. CONTACTS**

Indian Harbor Yacht Club  
710 Steamboat Road  
Greenwich CT, 06830

203-869-2484

[waterfront@indianharboryc.com](mailto:waterfront@indianharboryc.com)

[regatta@indianharboryc.com](mailto:regatta@indianharboryc.com)

VHF 68

Lat. 41° 00' 40"N Lon. 73° 37' 23"W

Principal Race Officer: P/C Jeff Merz

Event Co-Chair: John Melvin S/Y BLACKWATCH [jmelvin754@gmail.com](mailto:jmelvin754@gmail.com)

Event Co-Chair: P/C Ted Graves S/Y NOR'EASTER [ted@htgraves.com](mailto:ted@htgraves.com)

[www.yachtscoring.com](http://www.yachtscoring.com)

### Addendum 1 - Racing Mark List

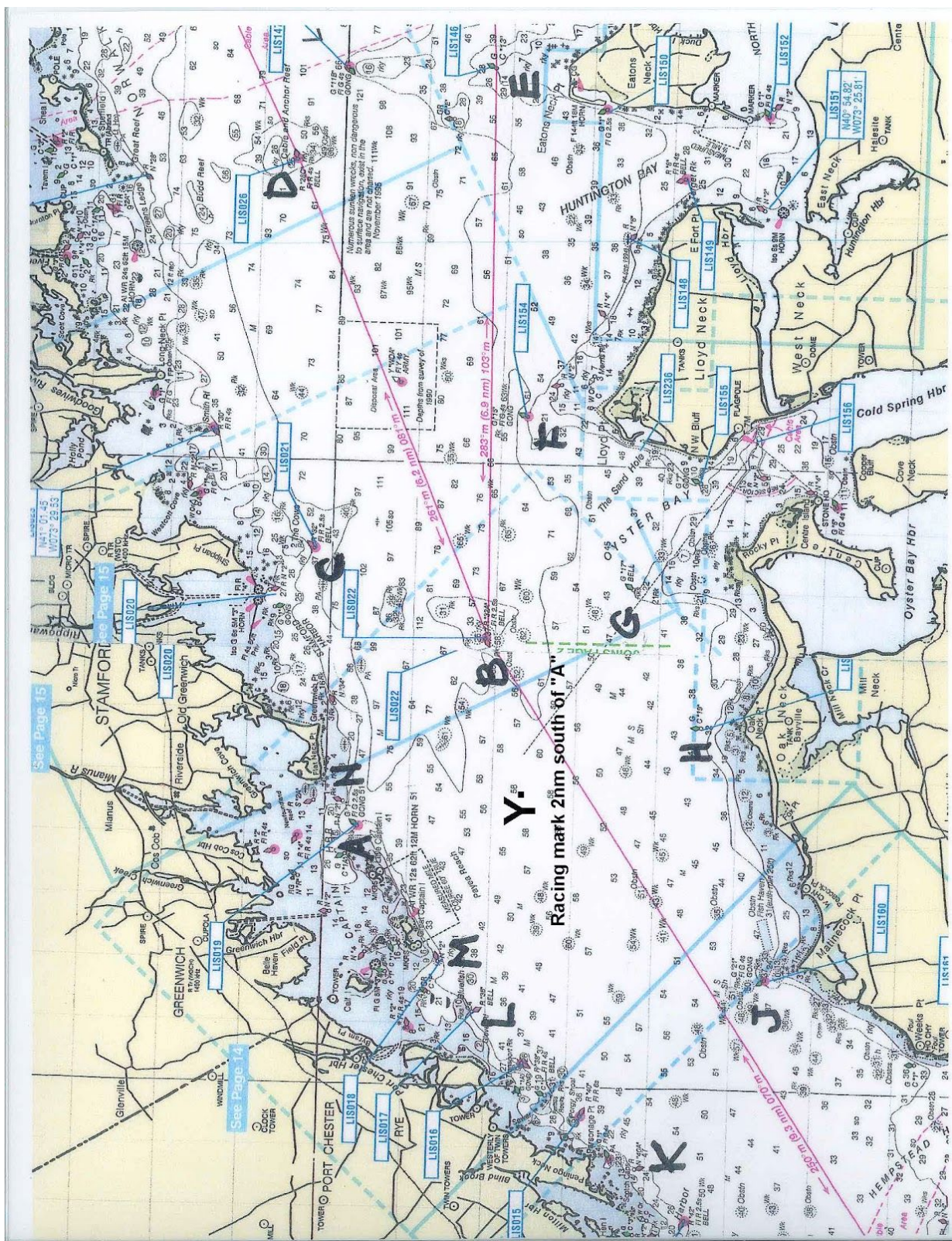
<b>Mark</b>	<b>Description of Mark</b>	<b>Approx. Location</b>
<b>A</b>	Gong G"1"	0.5 NM E of Little Captain Island
<b>B</b>	Bell R"32A"	2.3 NM SSE of Greenwich Point
<b>C</b>	Bell R"32"	0.8 NM S of Shippan Point
<b>D</b>	Bell R"28C"	3.4 NM N of Eatons Neck
<b>E</b>	Can C"13"	0.9 NM N of Eatons Neck
<b>F</b>	Gong G"15"	0.9 NM NNE of Lloyd Point
<b>G</b>	Bell G"17"	1.4 NM N of Rocky Point
<b>H</b>	Gong G"19"	0.6 NM N of Oak Neck Point
<b>J</b>	Gong G"21"	0.3 NM N of Matinecock Point
<b>K</b>	Nun "40A"	0.3 NM SSE of Peningo Neck
<b>L</b>	Bell R"36"	1.0 NM SW of Great Captain
<b>M</b>	Nun N"2"	0.2 NM SSW of Great Captain Island
<b>N</b>	Nun N"2"	0.4 NM ENE of Great Captain Island
<b>Y</b>	Special Racing Mark: Yellow Tetrahedron	2.0 NM S of Gong G "1"

Addendum 2 - Course List (See SI 8.3)

<b>Course</b>	<b>Rounding Order of Marks</b>	<b>Distance</b>
A	Z() Np Cs Bs As Cs Bs	19.2
B	Z() Np Cs Gs Bp	14.2
C	Z() Np Cs Bs Ap	11.4
D	Z() A() Bp Ap	8.5
E	Z() Np Cs Fs	14.0
F	Z() A() Gp Bp	11.4
G	Z() A() Bs Gs	10.9
H	Z() A() Bp Ap Mp Bp Ap	17.1
I	Z() A() Fp Cp	14.7
J	Z() Np Cs Bs As Cs	18.1
K	Z() A() Mp Cp	13.4
L	Z() Np Cs	9.6
M	Z() A() Bp Cp Ap Bp Cp	19.9
N	Z() A() Gp Cp Ap	14.8
O	Z() A() Gp Ap Bp Ap	17.4
P	Z() A() Bs Gs Ap	12.1
Q	Z() Np Cs Fs Ap	14.6
R	Z() A() Fs Ap	13.7
S	Z() N() Fp Cp	14.6
T	Z() Np Cs Ap Bs	14.5
U	Z() As	3.0
V	Z() A() Hp Fp Gs Bp	18.1
W	Z() A() Bp Cp	11.4
X1	Z() A() Ys	5.4
X2	Z() A() Bs Ys	8.1
X3	Z() A() Yp Ap	7.0
X4	Z() A() Yp Bp Ap	9.7

# Addendum 3 - Racing Area

Figure 1



## Addendum 3 - Racing Area (continued)

Figure 2

